



RTM-050 Magnetic Bearing Centrifugal Compressor

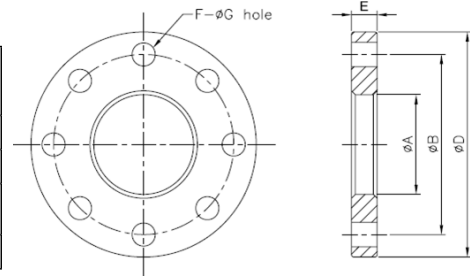
Specifications



Model		RTM-050	
Refrigerant		R134a / 1234ez	
Nominal cooling capacity		USRT(TONS)	200~250
Compressor	Type	Two-stage compression	
Axial Guide Vane Control	Inlet Guide Vanes	20~100% continuous	
	Voltage	220 VDC	
	Input Signal	4~20mA - DC: 1~5V - DC	
	Output Signal	4~20mA - DC	
Motor	Type	3 Phase, 2 Pole, Permanent magnet	
	Starting	VFD	
	Voltage	V	460
	Insulation	Class H	
	Protection	PT100*9 - Motor Winding(5) - Magnetic Bearing (4)	
Transmission	Type	Direct-driven	
	Lubrication	Oil free	
Hydrostatic pressure test		PSI (kg/cm ² g)	321 PSI (22 kg/cm ² g)
Dimension (LxWxH) Compressor		FT/M	3.35' x 2.03' x 1.74' (1.02 x 0.62 x 0.53)
Weight (Compressor)		LB/kg	772 lb (350 kg)
Shipping Weight (Components) 1 skid		LB	

Suction/discharge/economizer flange size

Position	Size	A	B	D	E	F	G	Piping Thickness	Bushing OD	
RTM-050	Suction	6"	6.71"	8.50"	9.72"	1.06"	0.31"	0.55"	0.41"	6.50"
	Discharge	4"	4.57"	6.30"	7.48"	1.18"	0.24"	0.55"	0.33"	4.50"
	MID-PRESS (Eco.)	1 1/2"	1.97"	3.74"	4.92"	0.79"	0.16"	0.55"	0.11"	1.91"
Remarks	*Material- standard JIS 284.47 pounds per square inch steel unit: inches									



Discharge Check Valve Size

To protect compressor from serious damage due to reverse rotation after emergency stop or shutdown, it is necessary to install the discharge check valve.

Warning: Discharge check valve is mandatory

Size	A(in)	B(in)	C(in)	D(in)
4"	2.52"	6.14"	4.41"	2.08"
6"	2.99"	8.38"	6.30"	3.03"
8"	3.50"	10.51"	8.27"	4.01"
10"	4.49"	12.91"	10.24"	4.21"
Remark	*The check valve is of wafer plate valve. Use ANSI 150 standard flange			

Check valve size

MCC

Model	Voltage	(kW)	Primary Side		SECONDARY SIDE (Inverter to RTM)	
	(V)		Hertz	MCC(A)	Hertz	MCC(A)
RTM-050	460	180	50/60	253	321.7	340